

Features

- Driver inside, Module design
- Perfect match to classic and modern Downlights and other fittings
- 6W, equal to 50W halogen fitting
- HALED optical design with patent, comfortable light like halogen
- Dimmable by Traic Dimmer
- High PF, Flicker free, Low UGR, CRI90
- Directional lighting source
- Titanium appearance, Metal materials, Perfect Heat-sinking
- Used for all kinds of non-enclosed lighting fixtures
- Lifespan 25000 hrs, 3 years warranty



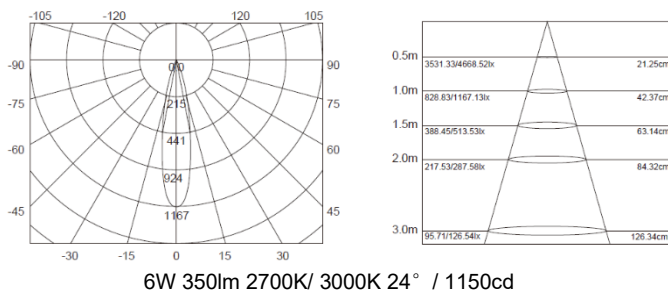
CE RoHS ErP

Applications:

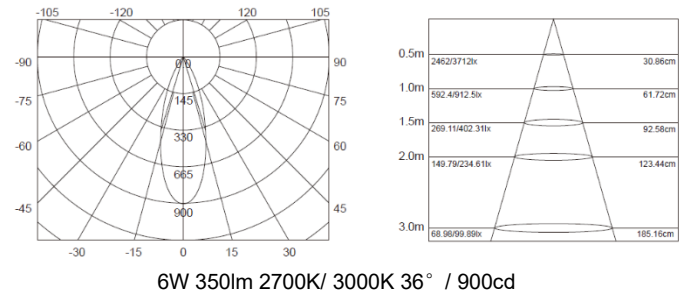
- Commercial Lighting: Hotels, Restaurants, Museum, Theater, Bars, Cafes, Shop, retail Etc.
- Home Lighting: Villa, Residential buildings, Indoor Lighting Etc.
- All non-enclosed Directional lighting fixtures

Technical data		
Part No.	DCVM001W06-47501/ 47505	DCVM001W06-47502/ 47506
Wattage (W)	6W	6W
Voltage (V)	AC200V-240V	AC200V-240V
Frequency (Hz)	50/60Hz	50/60Hz
Power factor	>0.8	>0.8
Dimmable	Dimmable	Dimmable
Color temperature (CCT)	2700K	3000K
Lumens(lm)	350	350
CRI	90	90
Beam angle (°)	24°/ 36°	24°/ 36°
Luminous intensity(cd)	1150cd/ 900cd	1150cd/ 900cd
Life Span(hrs)	25000hrs	25000hrs
Working temperatuer range	-20~+50℃	-20~+50℃
Storage temperature range	-20~+70℃	-20~+70℃
Gift Box Dimensions (LxWxH)	50*50*40mm	50*50*40mm
Inner Carton Dimensions (LxWxH)	270*110*55mm (20PCS)	270*110*55mm (20PCS)
Shipping Carton Dimensions(LxWxH)	580*285*185mm (150PCS)	580*285*185mm (150PCS)

Beam Angle(deg) & Illuminance (cd & lx) Diagram

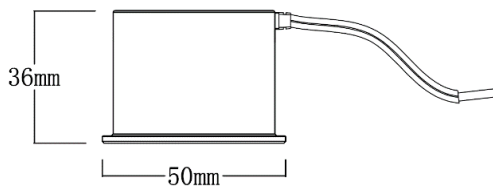


6W 350lm 2700K/ 3000K 24° / 1150cd



6W 350lm 2700K/ 3000K 36° / 900cd

Technical Drawings (mm)



Package



Gift Box 50*50*65mm



Inner Carton 270*110*55mm(20PCS)

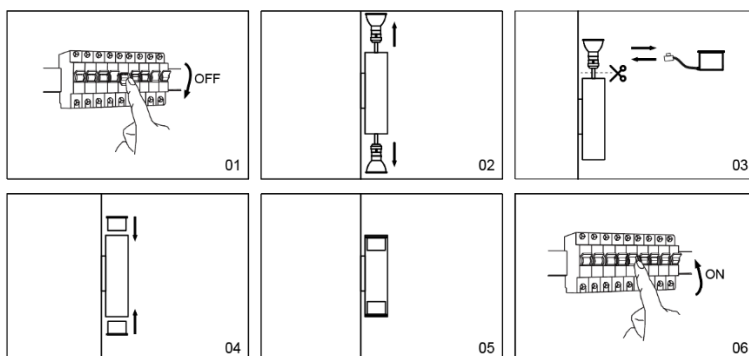


Shipping Carton 580*285*185mm(150PCS)

Installation /Mounting:

Please read the entire instruction manual before using the product and reserve it for future reference. We reserve the right for any error in text or image and any necessary change made to technical data. If you have any question regarding technical problems, please contact our Customer Services.

Replacement



Cautions:

- Don't touch the lamp when it is lighted
- Don't use it in enclosed fixtures
- Power off before replacement
- Do not in violation of any fire regulations when using
- Consult professional electricians for technical support
- If the cable is damaged, it must be replaced by the manufacturer and its service agent, or qualified person in order to avoid hazards.